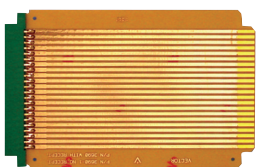
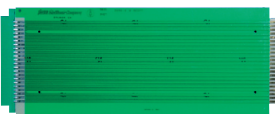


Extenders

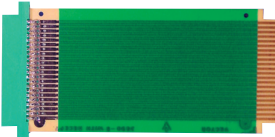
Vectorbord® extender cards provide convenient access to functioning circuit boards for testing. Engineered for quality, Vectorbord® extenders include low insertion force and gold-plated contacts for reliable connection and minimum wear on board.



3690
Extension length 6.5"
22 contacts per side on 0.156" centers
Fits Vector Series 12 or 13 Subracks
Current rating: 5 amps at 10° F rise
Voltage rating: 200 RMS or 300 VDC
Trace Width: 0.092"
Capacitance: Between traces, 9pf
Length of trace: 4.5pf



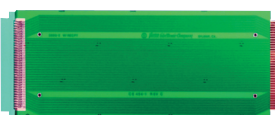
3690-6
Extension length 11.0"
22 contacts per side on 0.156" centers
Fits Vector Series 14 Subracks
Current rating: 5 amps at 10 degrees F rise
Voltage rating: 200 RMS or 300 VDC
Trace Width: 0.092"
Capacitance: Between traces, 15pf
Length of trace: 8.0pf



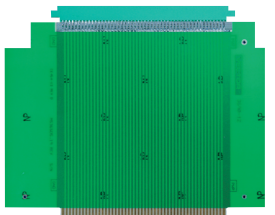
3690-8
Extension length: 5.5"
22 contacts per side on 0.1" centers
Fits Vector Series 12 or 13 Subracks
Current rating: 5 amps at 10 degrees F rise
Voltage rating: 200 RMS or 300 VDC
Trace Width: 0.062"
Capacitance: Between traces, 9pf
Length of trace: 3.2pf



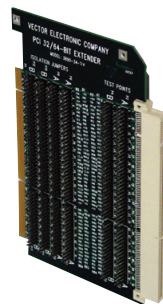
3690-16
Extension length: 6.5"
28 contacts per side on 0.125" centers
Fits Vector Series 12 or 13 Subracks
Also fits STD bus specifications
Current rating: 5 amps at 10 degrees F rise
Voltage rating: 200 RMS or 300 VDC
Trace Width: 0.062"
Capacitance: Between traces, 9pf
Length of trace: 4.5pf



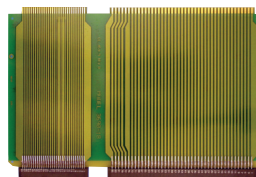
3690-2
Extension length: 11.0"
36 contacts per side on 0.10" centers
Fits Vector Series 14 Subracks
Current rating: 5 amps at 10 degrees F rise
Voltage rating: 200 RMS or 300 VDC
Trace Width: 0.062"
Capacitance: Between traces, 18pf
Length of trace: 6.3pf



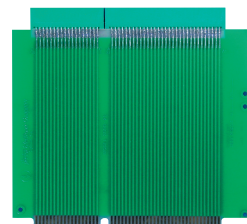
3690-12 **S100**
Extension length: 7.5"
50 contacts per side on 0.125" centers
Double sided controlled impedance board
High reliability, gold plated connector (mounted)
Contact fingers on card are nickel/gold-plated
2 oz. copper clad, flame retardant epoxy glass composite material - 94V-0-UL classification
Current rating: 5 amps at 10 degrees F rise
Voltage rating: 200 RMS or 300 VDC



3690-34-3V or 3690-34-5V **PCI**
Extender card for PCI expansion card uses the "universal" pattern for 32/64 bits in the "short-card" size
Extenders are size and pin compatible with both 5.0V & 3.3V versions respectively
Length: 6.875" (174.6mm)
Contacts: 120 Ni/Gold, 0.050" centers (2x60 tabs removed in two areas for keying space)
Height: 4.2" (106.7mm)
Layers: 4 Power layers may use 3.3V or 5.0V
Decoupling Caps: Installed. .1mf, 20%
Mounting Bracket: Included



3690-18 **Multibus**
Extension length: 7.65"
Double sided controlled impedance board
30/43 contacts each side on 0.100" centers
Reliable gold plated connector mounted on top and connected to circuit traces
Nickel/gold-plated fingers on extender card
Current rating: 5 amps at 10 degrees F rise
Voltage rating: 200 RMS or 300 VDC
Material: FR4, 2 oz copper clad
Also functions as cable terminator or experimental plugboard



3690-26 **IBM AT-ISA**
Extension length: 5.6"
Double sided controlled impedance board
18/31 contacts each side on 0.100" centers
Current rating: 5 amps at 10 degrees F rise
Voltage rating: 200 RMS or 300 VDC
Test points for mounting probes on each connector line
Also available 3690-26-1 multilayer extender with decoupling capacitors



3690-22 **IBM PC, XT**
Extension length: 5.7"
Double sided controlled impedance board
31 contacts each side on 0.100" centers
Test points for mounting probes on each connector line
Current rating: 5 amps at 10 degrees F rise
Voltage rating: 200 RMS or 300 VDC
Flame retardant laminate construction, 2 oz copper clad



3690-35 **PCMCIA Extender Board**
Fully assembled
Marked Legends
Test points on all lines
Dual row headers on 0.100" centers
Jumper connected power/ground
For Type II or Type III slots
68 pin connector

For a complete product list see Web page

Specifications subject to change without notice